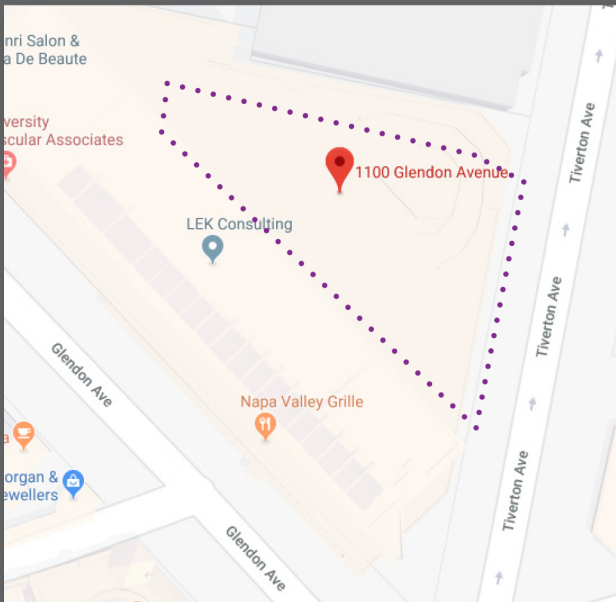
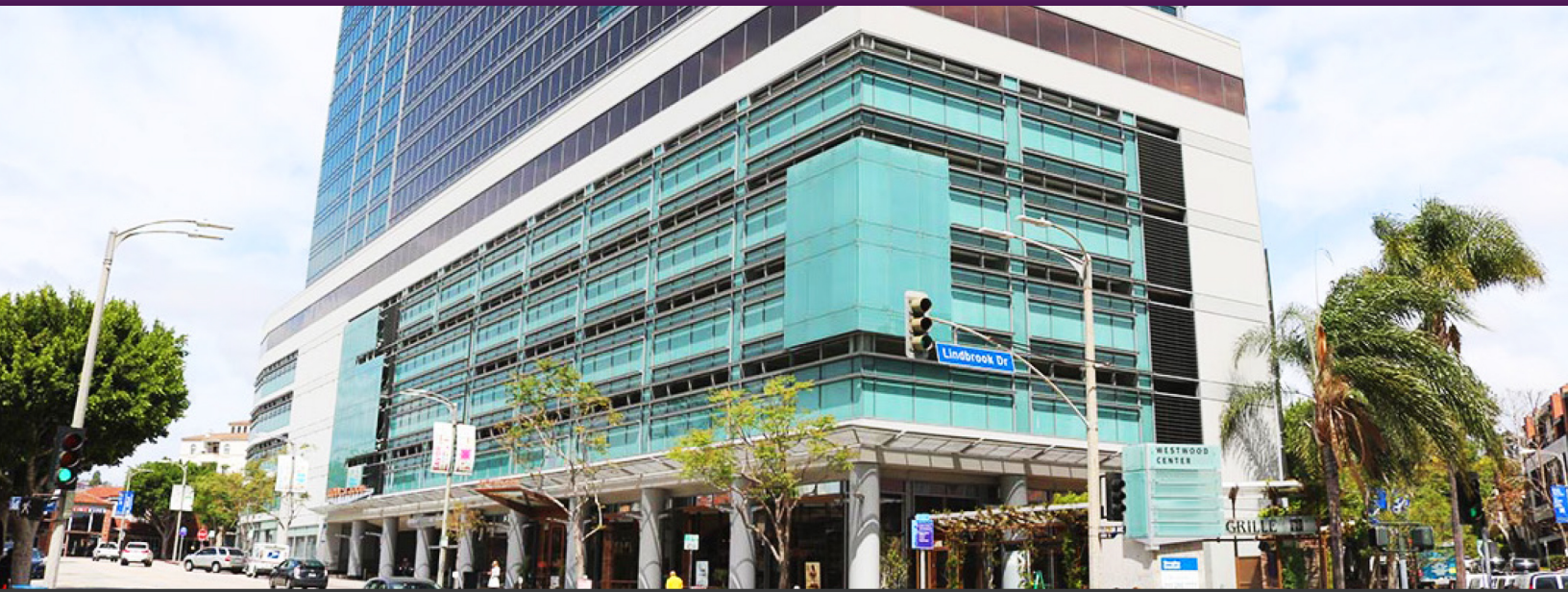


NELSONHARDIMAN
NELSONHARDIMAN.COM

1100 GLENDON AVE
LOS ANGELES, CA 90024



For more information or to schedule a tour, please contact:

NICOLE MITCHELL

leasing@nelsonhardiman.com
310.966.1279

AVAILABLE FOR SUBLEASE **±4500 TO ±5000 SQ FT** OFFICE SPACE

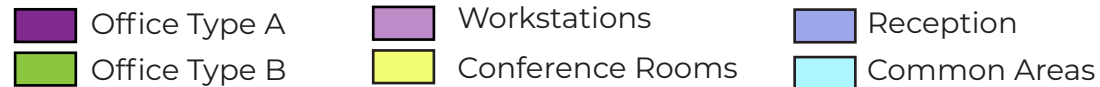
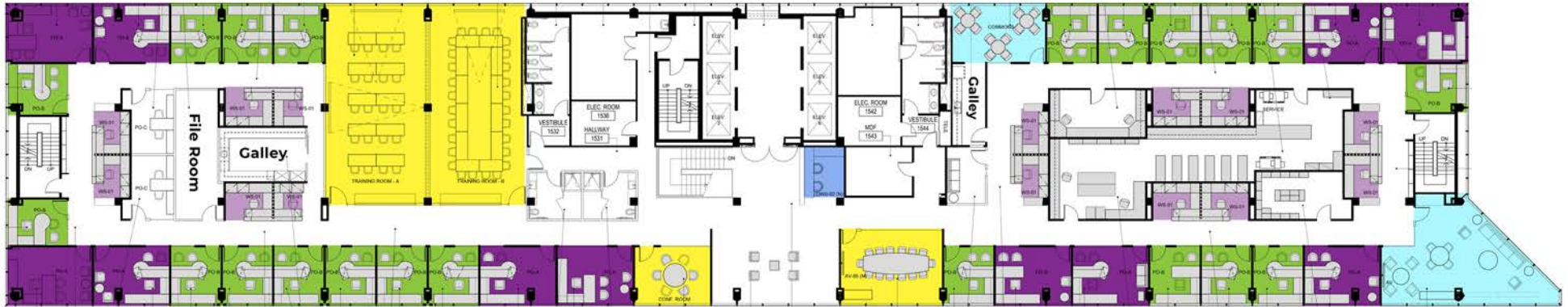
Located in the Heart of Westwood Village at 1100 Glendon Ave. is one of Los Angeles' premiere class "A" buildings. Recently renovated in 2000, this 333,830 square-foot office building offers dramatic ocean and mountain views from the tower's 22 floors.

Awarded the International BOMA 2000, the building features floor-to-ceiling glass, a beautifully designed lobby with abundant natural light, and state-of-the-art communication systems, including fiber optics and high-speed Internet capacity (T1 and T3). 1100 Glendon grants exceptional access in the heart of Westwood.

Amenities

- Reception
- Secured Building
- Conference Rooms
- Security System
- Full Service Restaurant Located On-site

NELSONHARDIMAN
HEALTHCARE LAWYERS
NELSONHARDIMAN.COM



32 Private Offices, 14 Open Workstations, 3 Conference Rooms, Reception, and Kitchen Area

Property Details

- Class A Office Space
- Located in the Heart of Westwood Village
- 126-200 sq. ft. Individual Offices Available
- Sweeping Views of West LA
- High Ceilings
- Furnished or Unfurnished Available
- Full-Time Reception
- Wifi
- Plug & Play
- Private Conference Rooms
- Large Multipurpose Room
- Communal Copier/Printer
- Kitchen Facilities
- Wellness Room



For more information or to schedule a tour, please contact us:
Email: leasing@nelsonhardiman.com Phone: 310-966-1279